

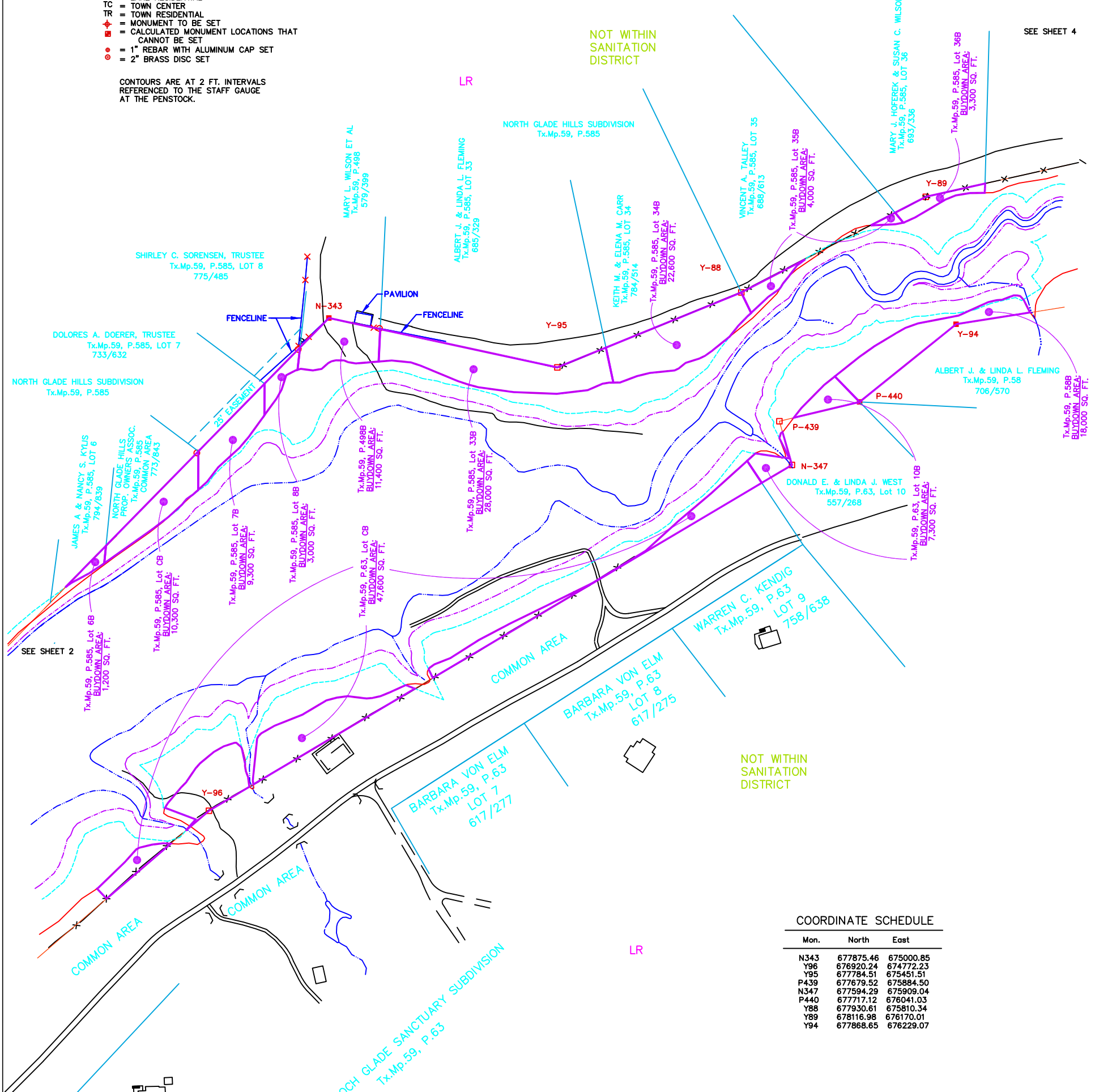
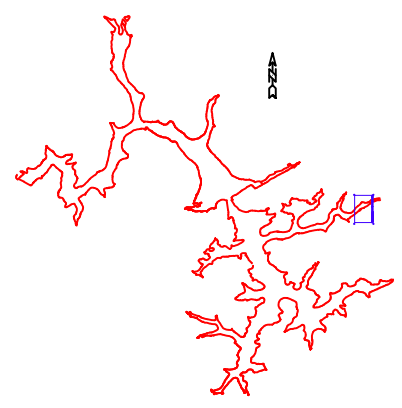
**LEGEND**

- = CONCRETE MONUMENT SET
- = CONCRETE MONUMENT FOUND
- = MONUMENT LINE
- = 2466 CONTOUR LINE
- = 2462 CONTOUR LINE
- = 25 FT. SAFETY LINE
- = BUYDOWN AREAS
- LR = LAKE RESIDENTIAL
- TC = TOWN CENTER
- TR = TOWN RESIDENTIAL
- ⊕ = MONUMENT TO BE SET
- ⊕ = CALCULATED MONUMENT LOCATIONS THAT CANNOT BE SET
- = 1" REBAR WITH ALUMINUM CAP SET
- = 2" BRASS DISC SET

CONTOURS ARE AT 2 FT. INTERVALS REFERENCED TO THE STAFF GAUGE AT THE PENSTOCK.

**DEEP CREEK LAKE SURVEY DATA**

1. **HORIZONTAL DATUM**  
 HORIZONTAL DATUM = LAMBERT NAD 83 DATUM  
 NAD 83 DATUM = FIELD OBSERVATION X COMBINED SCALE FACTOR  
 COMBINED SCALE FACTOR = GRID SCALE FACTOR X ELEVATION SCALE FACTOR  
 APPROXIMATE COMBINED SCALE FACTOR = 0.99989
2. **VERTICAL DATUM**  
 VERTICAL DATUM = LAKE DATUM  
 LAKE DATUM = NAVD 88 DATUM - 1.80 FT.



**COORDINATE SCHEDULE**

Mon.	North	East
N343	677875.46	675000.85
Y96	676920.24	674772.23
N-343	677784.51	675451.51
P439	677679.52	675884.50
N347	677594.29	675909.04
P440	677717.12	676041.03
Y88	677930.61	675810.34
Y89	678116.98	676170.01
Y94	677868.65	676229.07

**SURVEY CALLS**

CONC.MON.	BEARING	DISTANCE
N342-N343	N 44°23' E	1586.53'
N343-Y95	S 77°49' E	455.82'
Y95-Y88	N 67°51' E	387.43'
Y88-Y89	N 62°36' E	405.09'
Y89-Y90	N 77°22' E	582.38'
Y93-Y94	S 80°59' W	865.09'
Y94-P440	S 51°08' W	241.50'
P440-P439	S 76°30' W	160.99'
P439-N347	S 16°04' E	88.69'
N347-Y96	S 59°20' W	1321.62'
Y96-N348	S 49°20' W	1309.93'

**PENELEC CALLS**

CONC.MON.NO.	BEARING	DISTANCE
N-342	N 42° 11' E	1589.20 FT.
Y-96	S 76° 59' E	473.60 FT.
Y-95	N 68° 12' E	377.80 FT.
Y-88	S 58° 40' E	398.10 FT.
Y-89	N 74° 18' E	602.50 FT.
Y-93	S 79° 05' W	870.80 FT.
Y-94	S 49° 16' W	243.10 FT.
P-440	S 74° 43' W	160.90 FT.
P-439	S 17° 53' E	76.50 FT.
N-347	S 58° 16' W	1302.40 FT.
Y-96	S 47° 57' W	1314.80 FT.

SHT. NO. **3**

DRAWING 3, SKY VALLEY

DEEP CREEK PROJECT  
BUY DOWN SURVEY

CREATED BY: MORGAN C. FRANCE, L.S., P.E.  
10 North Third Street  
Oakland, Maryland 21550  
(301) 334-2305

REVISIONS

1/25/01	2/7/01
---------	--------

APPROVED BY: MORGAN C. FRANCE  
and MARGARET A. JORDAN  
DATE: 6/29/00 at 12:30  
123\C:\DATA\EP\PROJECTS\JCL2000\SKVALY3